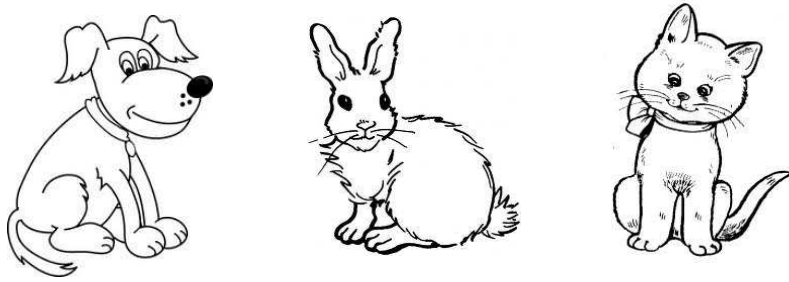


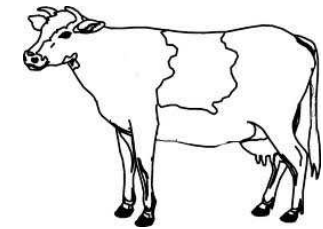
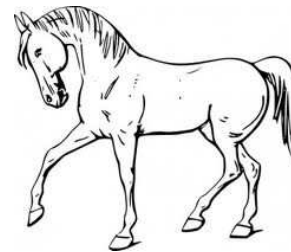
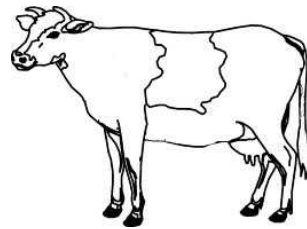
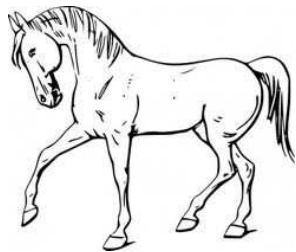
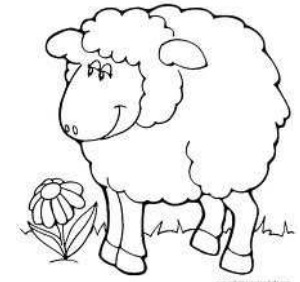
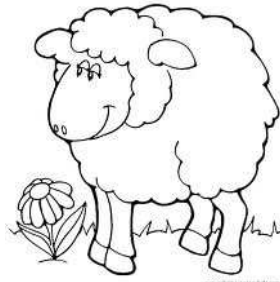
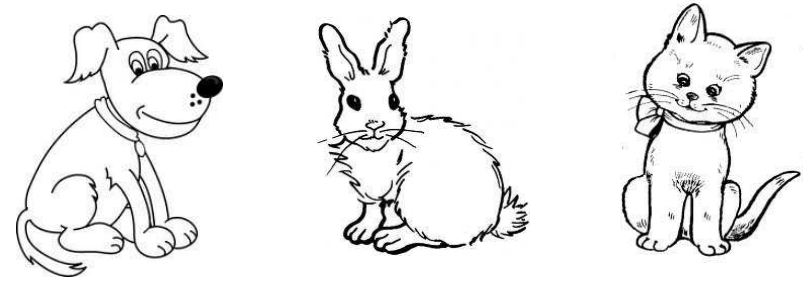
COPY THE WORDS UNDER THE PICTURE

A DUCK, A SHEEP, A RABBIT, A CAT, A COW, A HORSE, A DOG,



COPY THE WORDS UNDER THE PICTURE

A DUCK, A SHEEP, A RABBIT, A CAT, A COW, A HORSE, A DOG,



The dog is orange.
The rabbit is blue.
The duck is green.
The horse is brown.

The sheep is black.
The cat is yellow.
The cow is brown and white.



The dog is orange.
The rabbit is blue.
The duck is green.
The horse is brown.

The sheep is black.
The cat is yellow.
The cow is brown and white.



